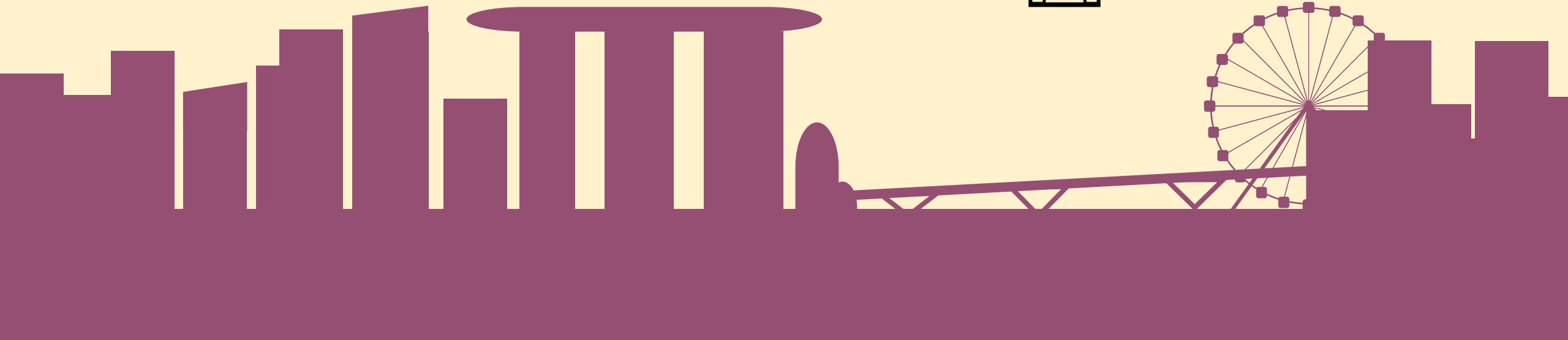


# Teng bong.

Tudu bong?

Kung forsa di:



15 / 11

Keng yo? **1**

17 / 11

Ki yo teng? **2**

22 / 11

Keng yo sa familia? **3**

24 / 11

Ki yo fazeh? **4**

Revision

Verbs!

Game time

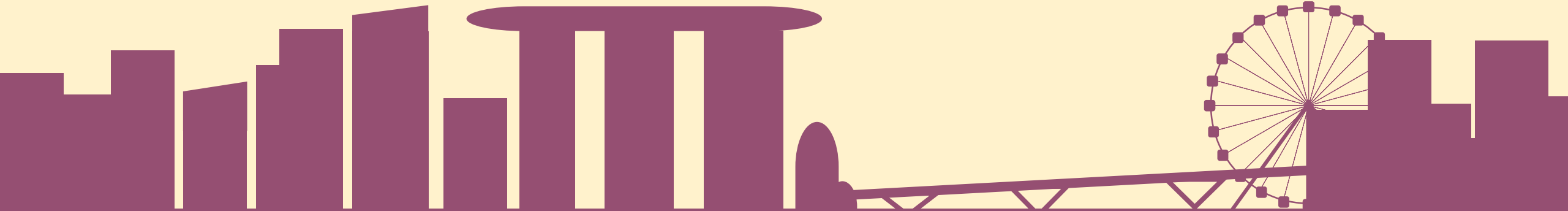
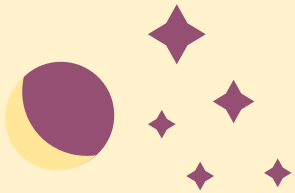
Break

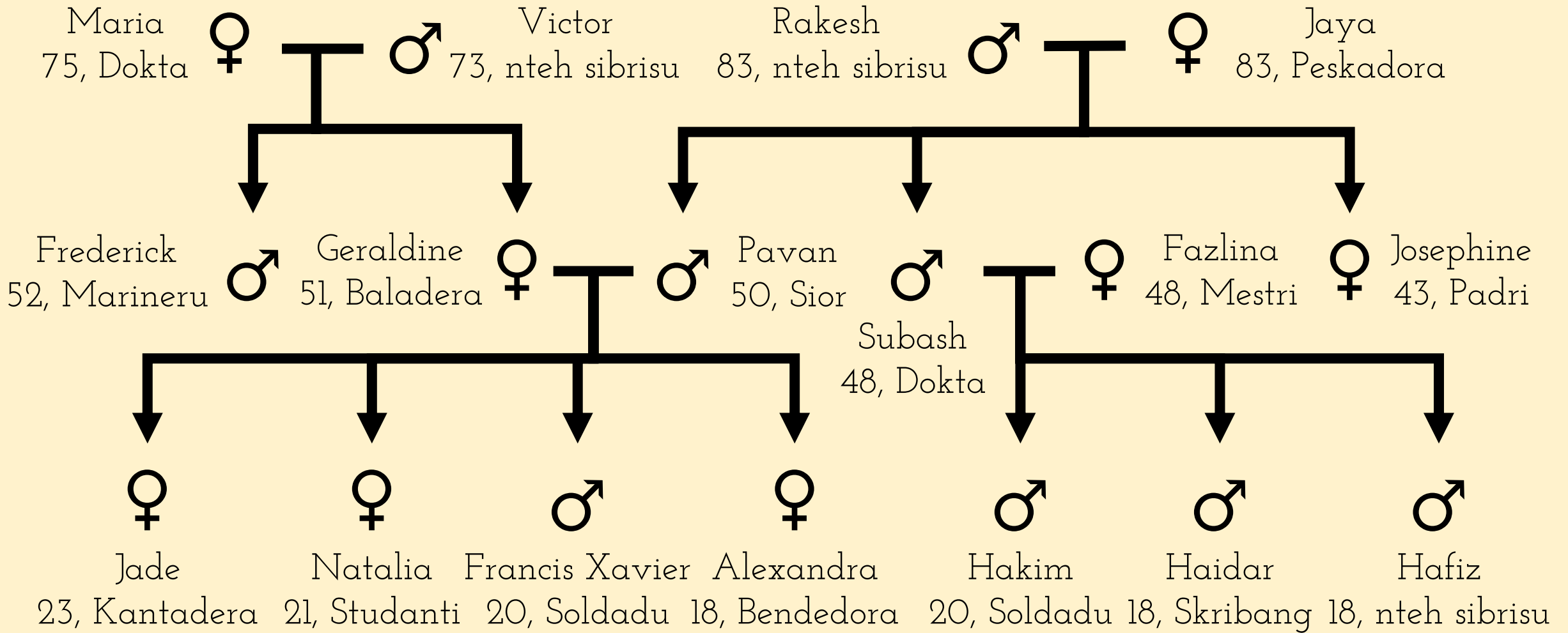
ku/kung

Game time

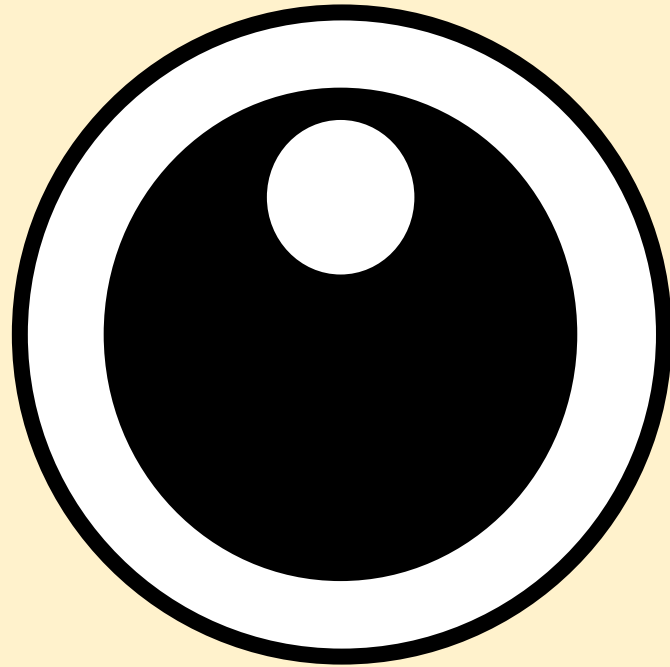
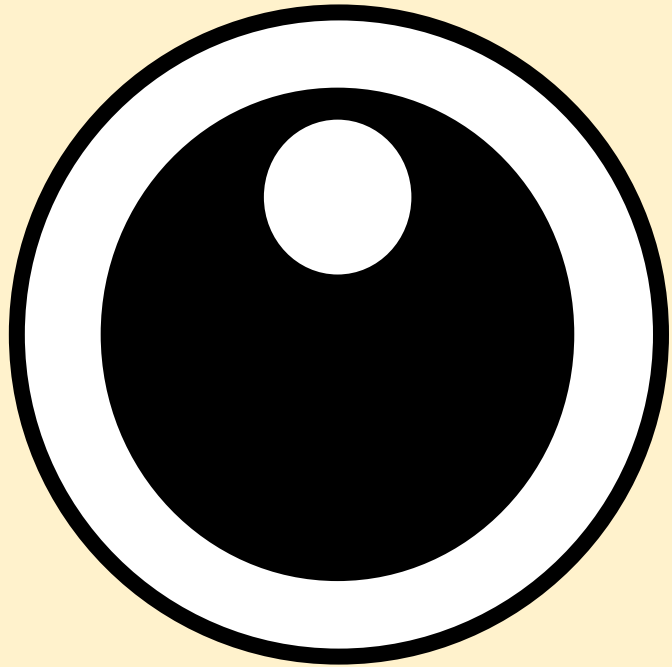
Understanding check

Kabakatra





## Albi di Familia



**olah**

Yo olah kachoru.



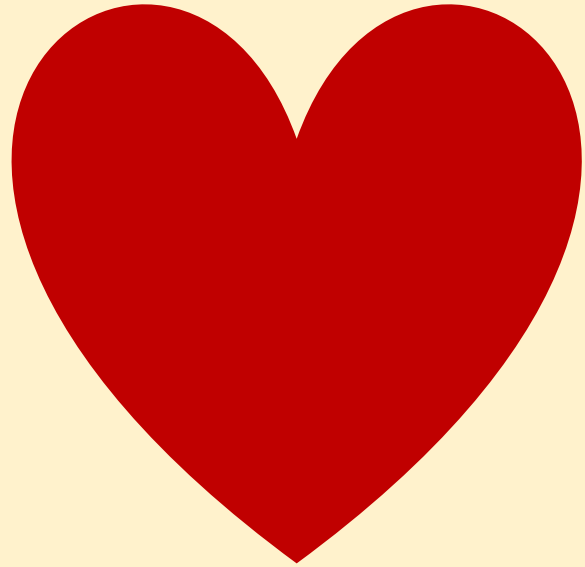
**ubih**

Bos ubih musikku.

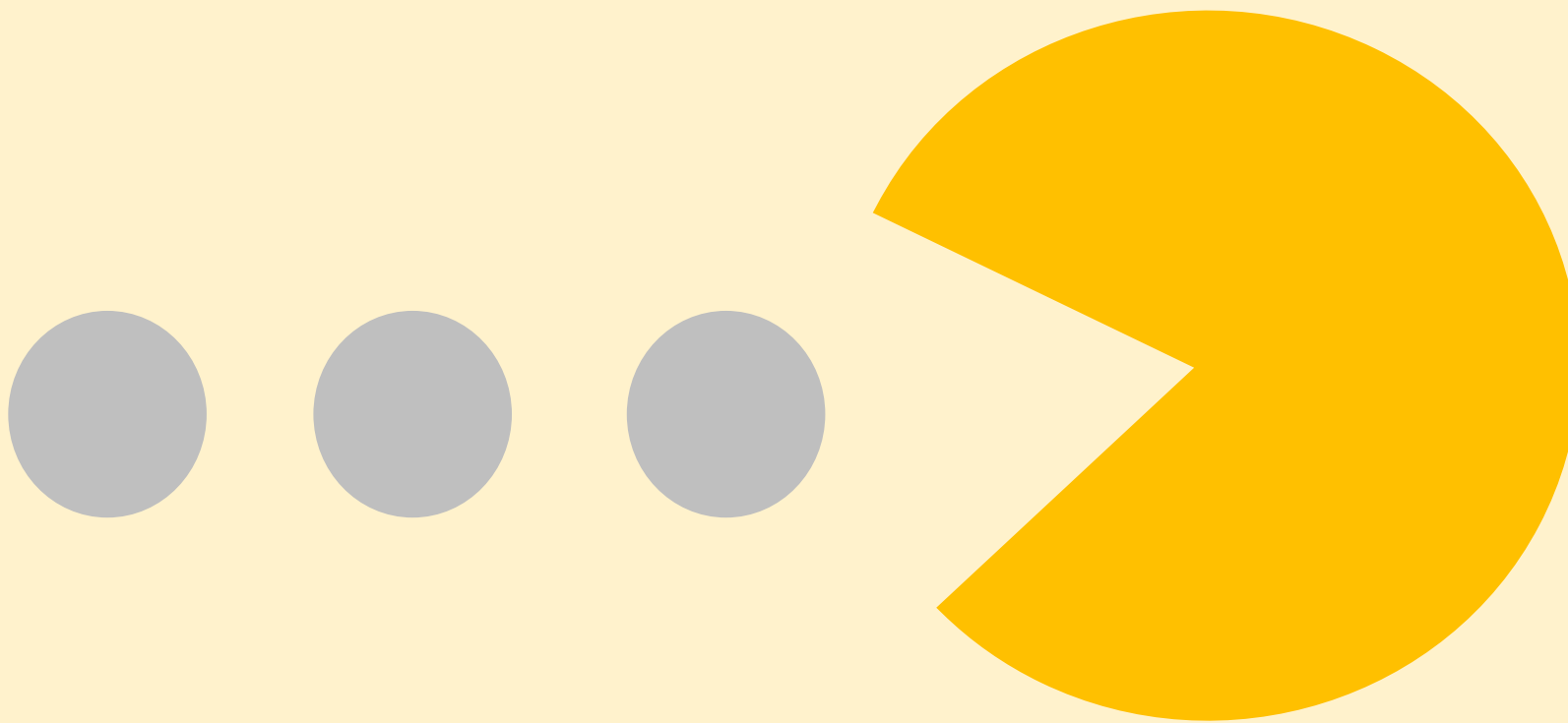
Wah, isti femi chadu  
papiah Kristang ah!

Yo podih!

**papiah**  
Eli papiah Kristang.



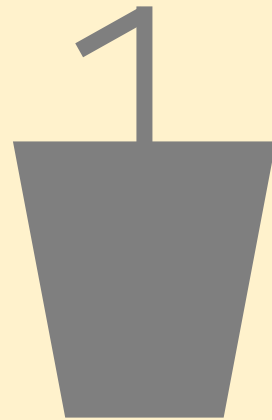
**gostah**  
Nus gostah tudu.



**kumih**

Pacman kumih tantu.



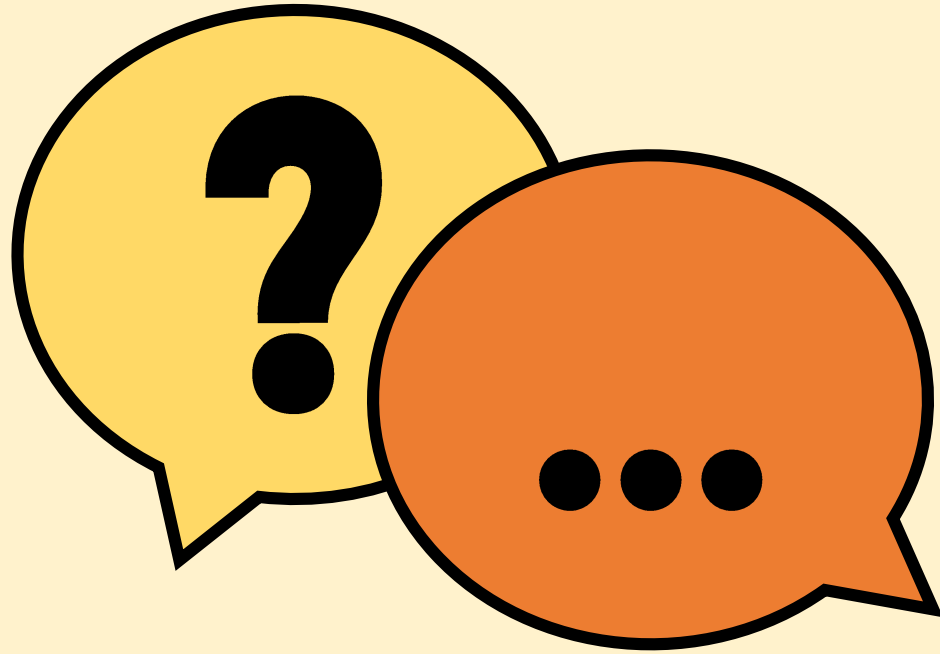


**bebeh**

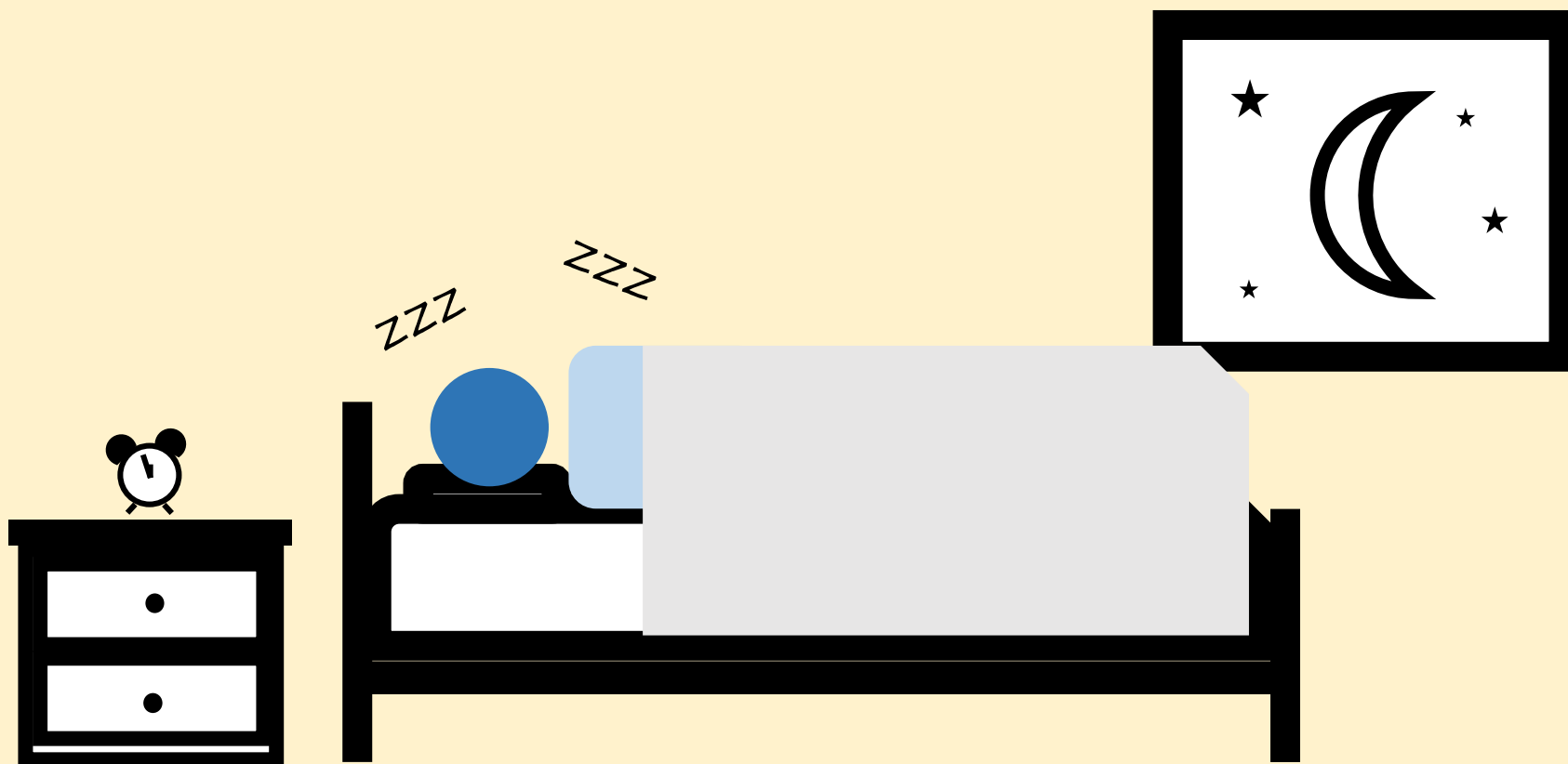
Pacman bebeh tantu.



**pruntah**  
Denise pruntah tantu.

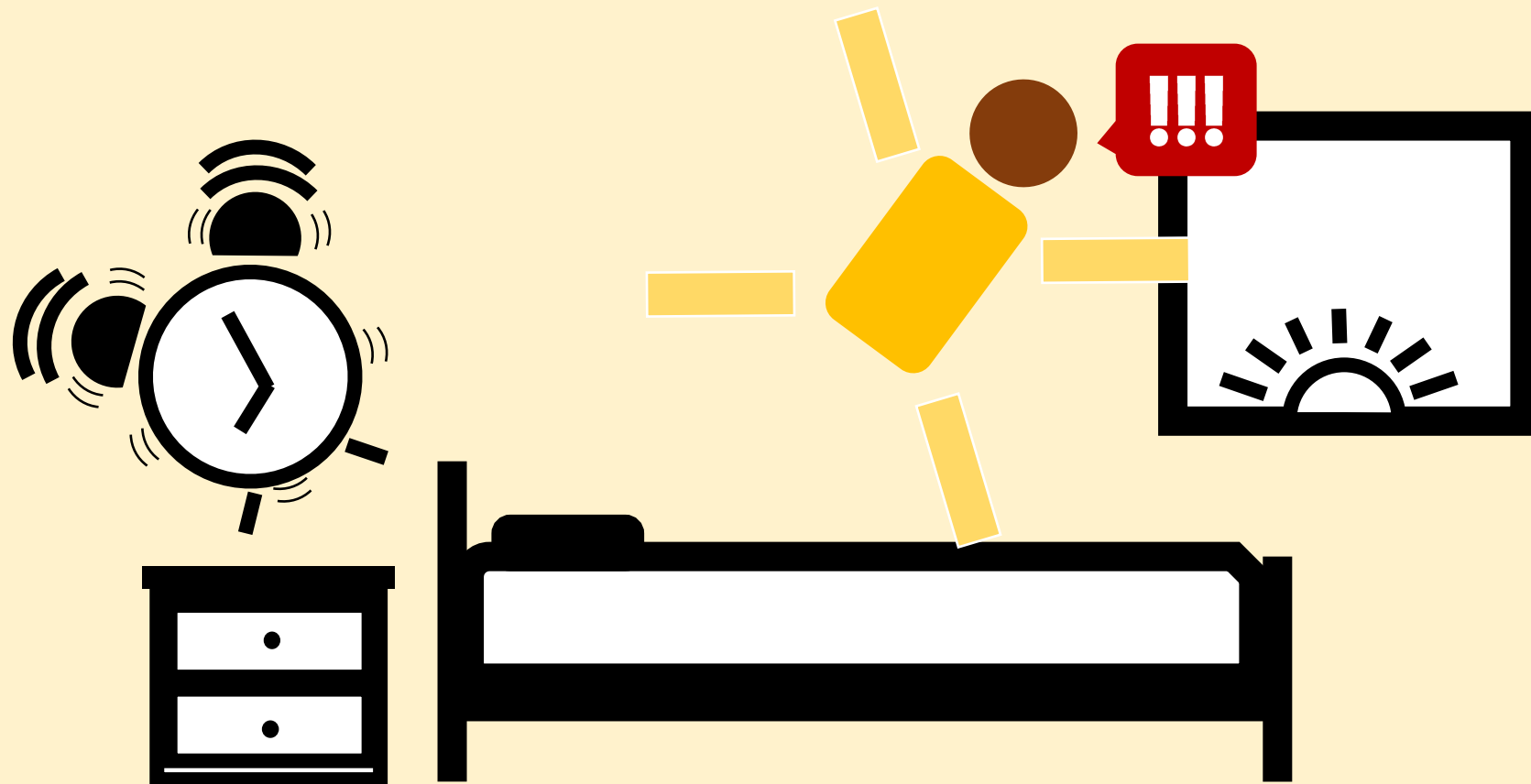


**repostah**  
Kevin repostah tantu.



**drumih**

Kristang drumih?



**kodrah**

Ngka, Kristang kodrah!



Ki fazeh  
peskadora?

Peskadora **peskah.**

Ki fazeh  
bendedora?

Bendedora **bendeh.**





Ki fazeh  
kantadera?

Kantadera  
**kantah.**





Ki fazeh baladera?

Baladera **balah.**



Ki fazeh kuzinyera?

Kuzinyera **kuzeh**.



Ki fazeh  
marineru?

Marineru  
**nabegah.**



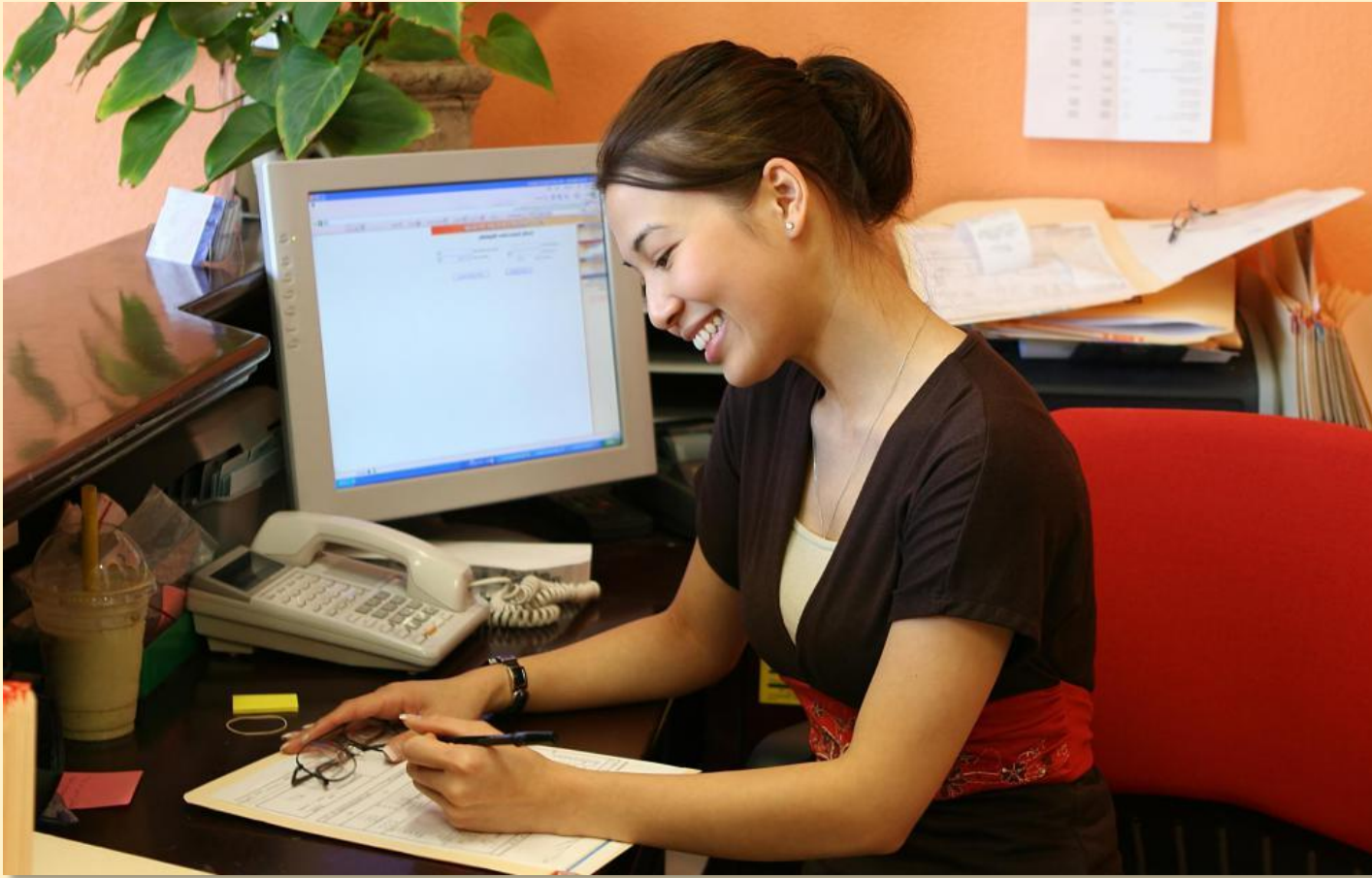
Ki fazeh padri?

Padri **rezah**.

Ki fazeh sior?

Sior **lebah.**





Ki fazeh  
skribang?

Skribang  
**skribeh.**

Ki fazeh dokta?

Dokta **judah.**



Ki fazeh soldadu?

Soldadu **brigah.**





Ki fazeh mestri?  
Mestri **insinyah**.

Ki fazeh studanti?  
Studanti **prendeh**.



# Palaksang<sup>^</sup>

brigah  
insinyah  
judah  
kantah  
lebah  
nabegah  
peskah  
pruntah  
rezah

bebeh  
bendeh  
fazeh  
skribeh

kumih  
pidih

teng(ø)

# GAME TIME

1. FORM A GROUP AROUND EACH STACK OF CARDS.
2. EACH CARD HAS A VERB WRITTEN ON IT IN KRISTANG.
3. THE OBJECTIVE OF THE GAME IS TO COLLECT AS MANY OF THESE CARDS AS YOU CAN.
4. TAKE A CARD AND PLACE IT FACE UP ON YOUR FOREHEAD WITHOUT looking at it.
5. THE OTHER PLAYERS TRY TO HELP YOU GUESS WHAT THE VERB IS WITHOUT SAYING ANYTHING IN ANY LANGUAGE.

# GAME TIME

- b. You HAVE to guess what the VERB is within 10 seconds. If you guess CORRECTLY, you get a point, AND you RETURN the CARD to the deck. If you DON'T guess CORRECTLY, you HAVE to KEEP the CARD ON your FOREHEAD AND try AGAIN when play REACHES you AGAIN.

# RESTU

Andah-andah

Bai kakus

Bebeh-bebeh

**nus**

Yo kon Mathias papiah Kristang.

Nus papiah Kristang.

# bolotu

Bos kon Sarah papiah Inggris.

Bolotu papiah Inggris.

**olotu**

Eli kon Mary papiah China.

Olotu papiah China.



jenti x1

yo  
bos  
eli

jenti x2,x3,etc.

nus  
bolotu  
olotu

kon/ku/kung

**olah**

Yo olah kachoru.

Yo olah **kung** Mathias.

**ubih**

Bos ubih gatu.

Bos ubih **kung** Frances.

**papiah**

Eli papiah Kristang.

Eli papiah **kung** Bernard.

**gostah**

Nus gostah libru.

Nus gostah **kung** Tammy.

# kumih

Bolotu kumih kari.

Bolotu kumih kung Ani (!)

# bebeh


Olotu bebeh agu.

Olotu bebeh kung Fuad (!)

Bos falah kung kontu bos sabeh isti jenti.




1 Yo olah gatu. 

2 Yo olah kung gatu. 

Gatu ngka jenti!

1 Yo ubih Chelsea. 

2 Yo ubih kung Chelsea. 

Chelsea jenti!

1 Yo papiah Melissa. ❌

2 Yo papiah kung Melissa. ✅

Melissa jenti!

1 Yo gostah yo sa dokta. ❌


2 Yo gostah kung yo sa dokta.

Dokta jenti! ✅

1 Yo olah bos sa libru. 

2 Yo olah kung bos sa libru. 

Libru ngka jenti!

1 Yo ubih olotu sa mai. 

2 Yo ubih kung olotu sa mai. 

Mai jenti!

Linggu

1 Yo papiah Kristang.




2 Yo papiah kung Kristang.



Jenti

1 Yo gostah eli sa mang. 

2 Yo gostah kung eli sa mang.

Mang parti di jenti, ngka jenti! 



# GAME TIME

1. Form three groups around each stack of cards.
2. The objective of the game is to collect as many cards as possible by saying complete and grammatically accurate sentences in Kristang.

# GAME TIME

3. On each your turn,
  - A. draw a card and place it face up on the ground so that EVERYONE CAN SEE it.
  - B. roll the die.
  - C. try to make a Kristang sentence based on the card you have drawn and the personal pronoun indicated by the die.

# GAME TIME

E.g. if KEVIN DRAWS "kantah" from the pile AND ROLLS A 6 "olotu", HE CAN SAY "olotu kantah", "Kevin kantah kung olotu", etc.

E.g. if FUAD DRAWS "kuzinyeru" from the pile AND ROLLS A 4 "nus", HE CAN SAY "kuzinyeru olah kung nus".

# GAME TIME

4. If you make a grammatical sentence, you keep the card and get a point.
5. If you can't make a grammatical sentence, the card is open to the floor, and the first person to make a grammatical sentence gets the point.
6. Your sentence must be three words or more.

# Dice Rolls

1-yo

4-nus

2-bos

5-bolotu

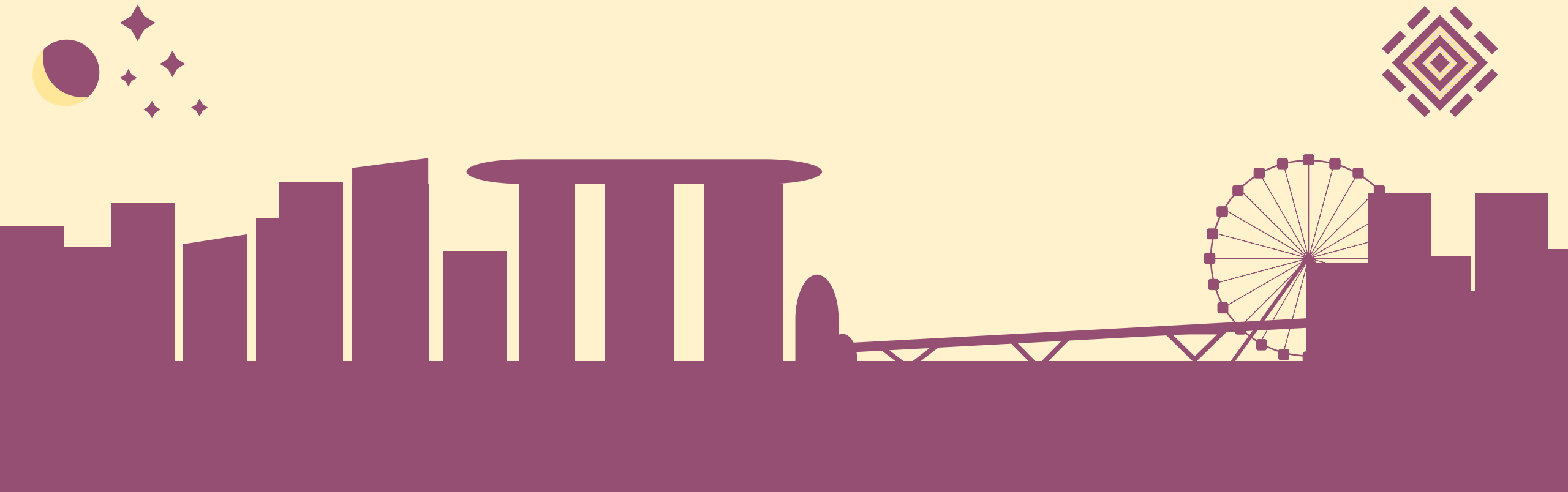
3-eli

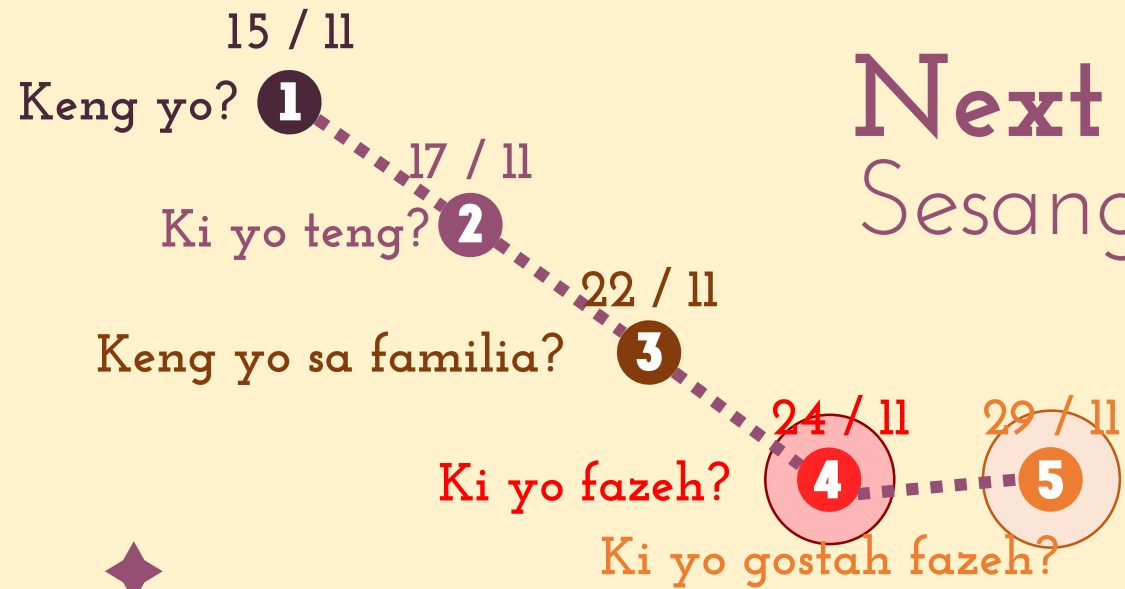
6-olotu

# Kabakatra

A) Two sentences using ku/kung!

B) All the things that were difficult for you today.





# Next session

Sesang prosimu | 29 Novembru

# Mutu merseh!

Kodrah **KRISTANG** sigih kung forsa di

