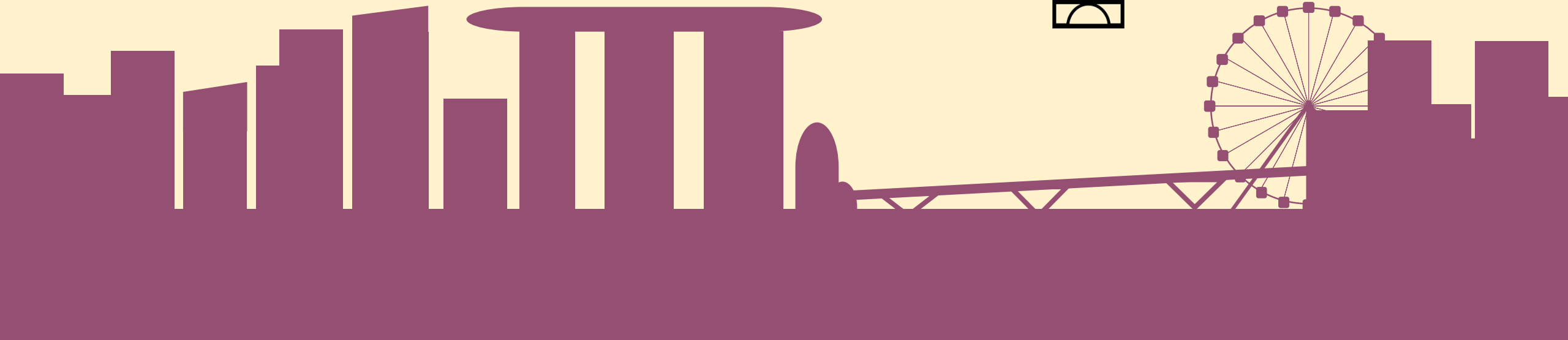


Teng bong. Tudu bong?

Kung forsa di:



17 / 11

Keng yo? **1**

24 / 11

Ki yo teng? **2**

1 / 12

Keng yo sa familia? **3**

Revision

Kevin sa familia

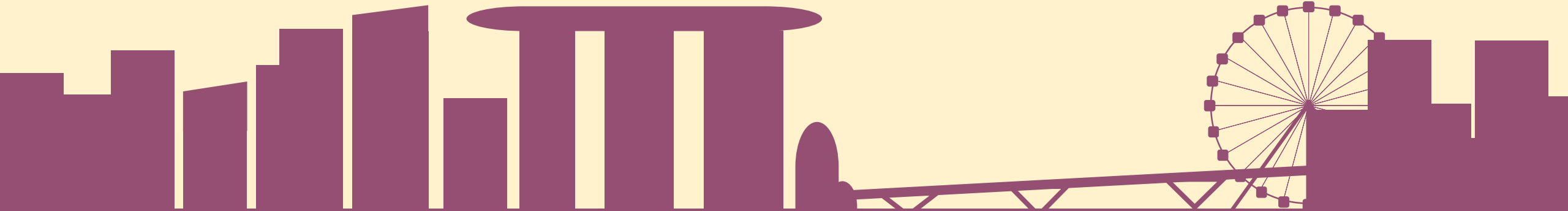
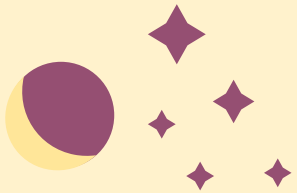
Bos sa familia

Break

Game time

Understanding check

Kabakatra



Revision time

1. Form groups of 8.
2. Each group gets an A3 sheet and two dice.
3. Each turn, roll the dice. Based on the number you rolled, choose one of the number cards on the A3 sheet to remove.
4. Underneath the number card is an animal or job. Make a sentence with it for a point!

femi ♀ ♂ machu

Kevin sa familia

Mai



Pai

Mai-Pai



Yo



Ilmoang (krenchu)

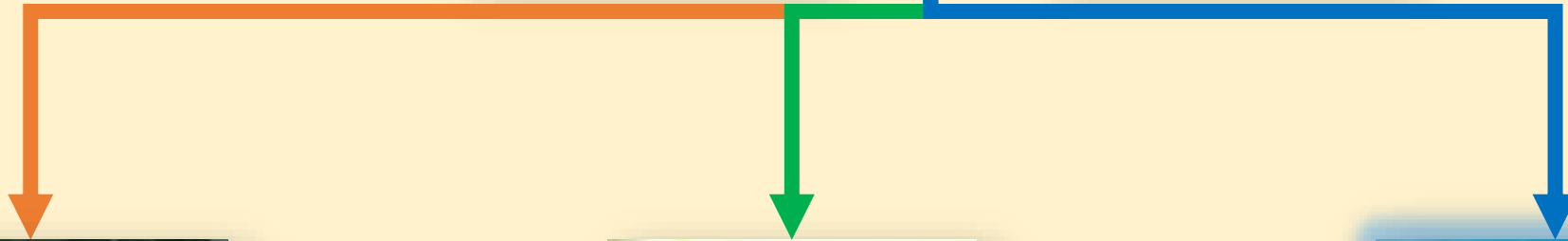


Ilmoang (krenchu)

Mai



Pai



IrmKong (yongchu)



Irmcong (grachoi)

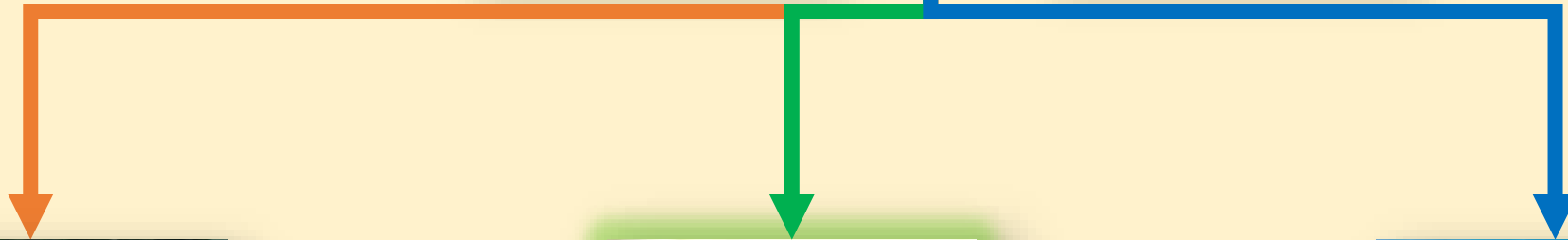


Yo

Mai



Pai



Irmong (yongchu)



Yo



Irmong (keachu)

Aboh
(femi)



Aboh
(machu)

Aboh-aboh



Tia Mai



Pai



Yo



Irmang



Irmang

Mai



Pai



Susi Yo



Maridu



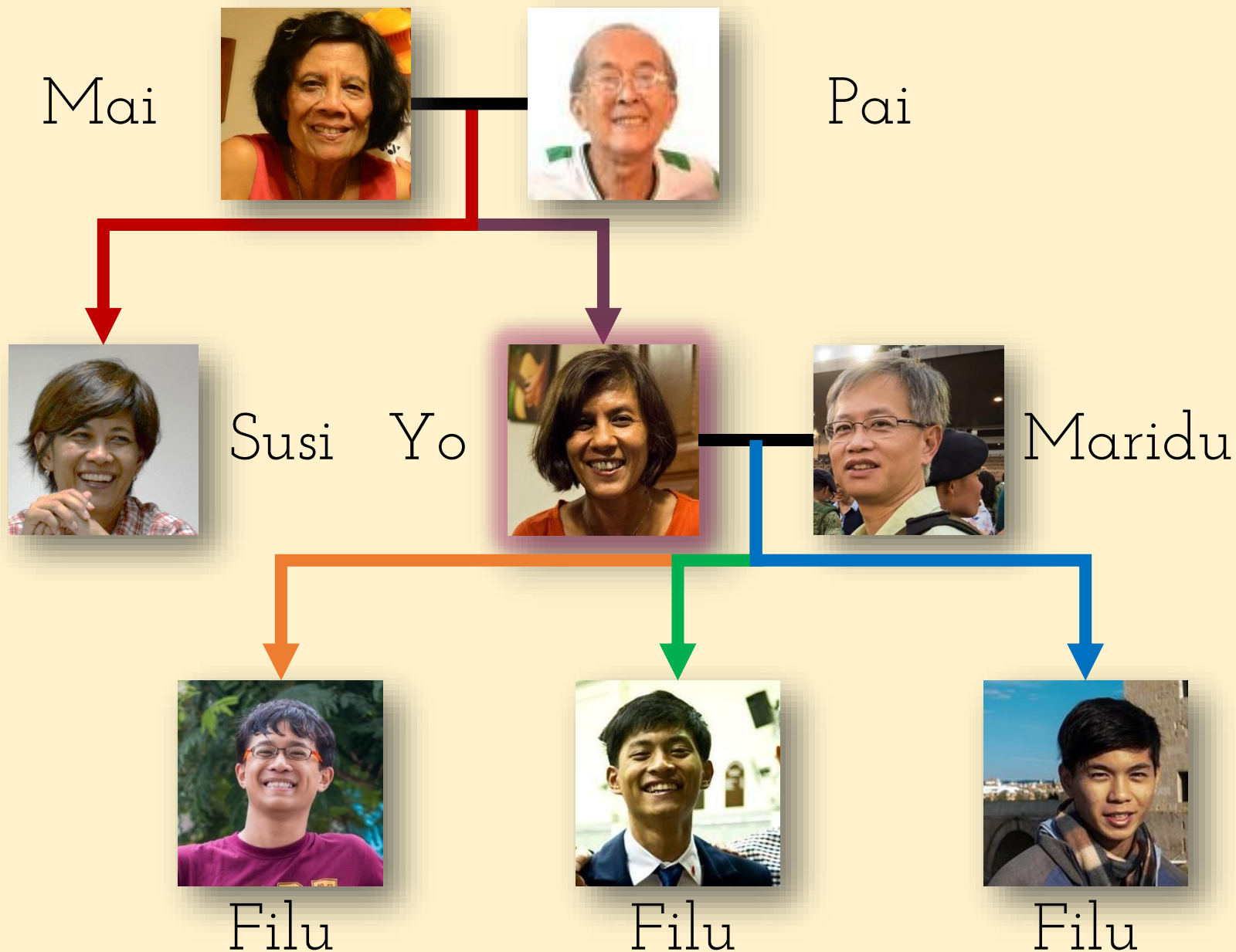
Filu



Filu



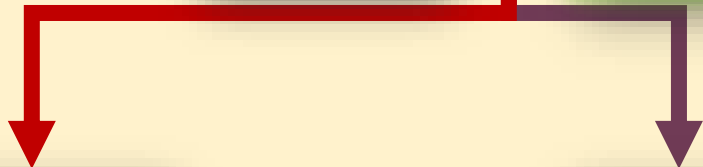
Filu



Muleh



Yo



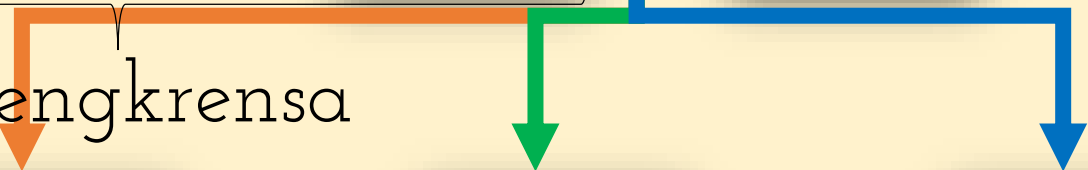
Fila Fila



Jeru

x 1 = Krensa
x2, 3, etc. = Krengkrensa

Krengkrensa



Netu



Netu



Netu

Aboh

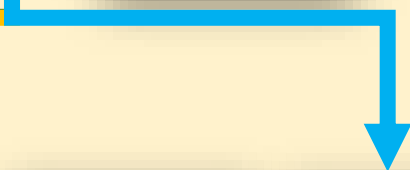
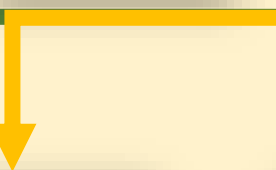
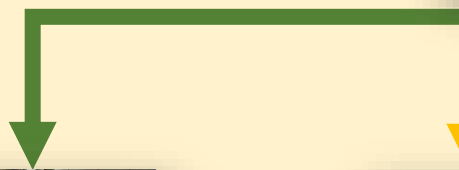
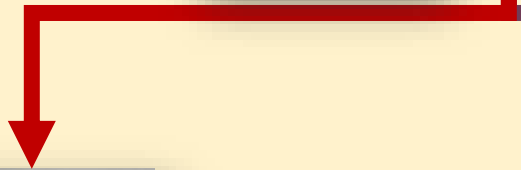
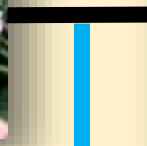
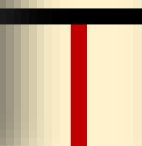


Aboh

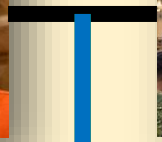
Aboh



Aboh



Tia Mai



Pai



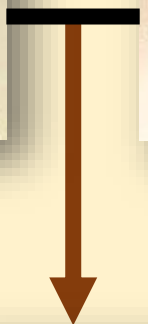
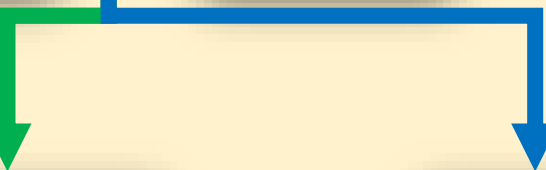
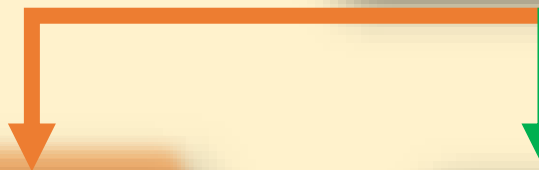
Tia



Tiu



Tiu



Yo



Irmang



Irmang



Primu

Sogra



Sogru

Mai



Pai



Muleh



Yo



Susi

Kunyadu Irmang

Kunyada



Filu



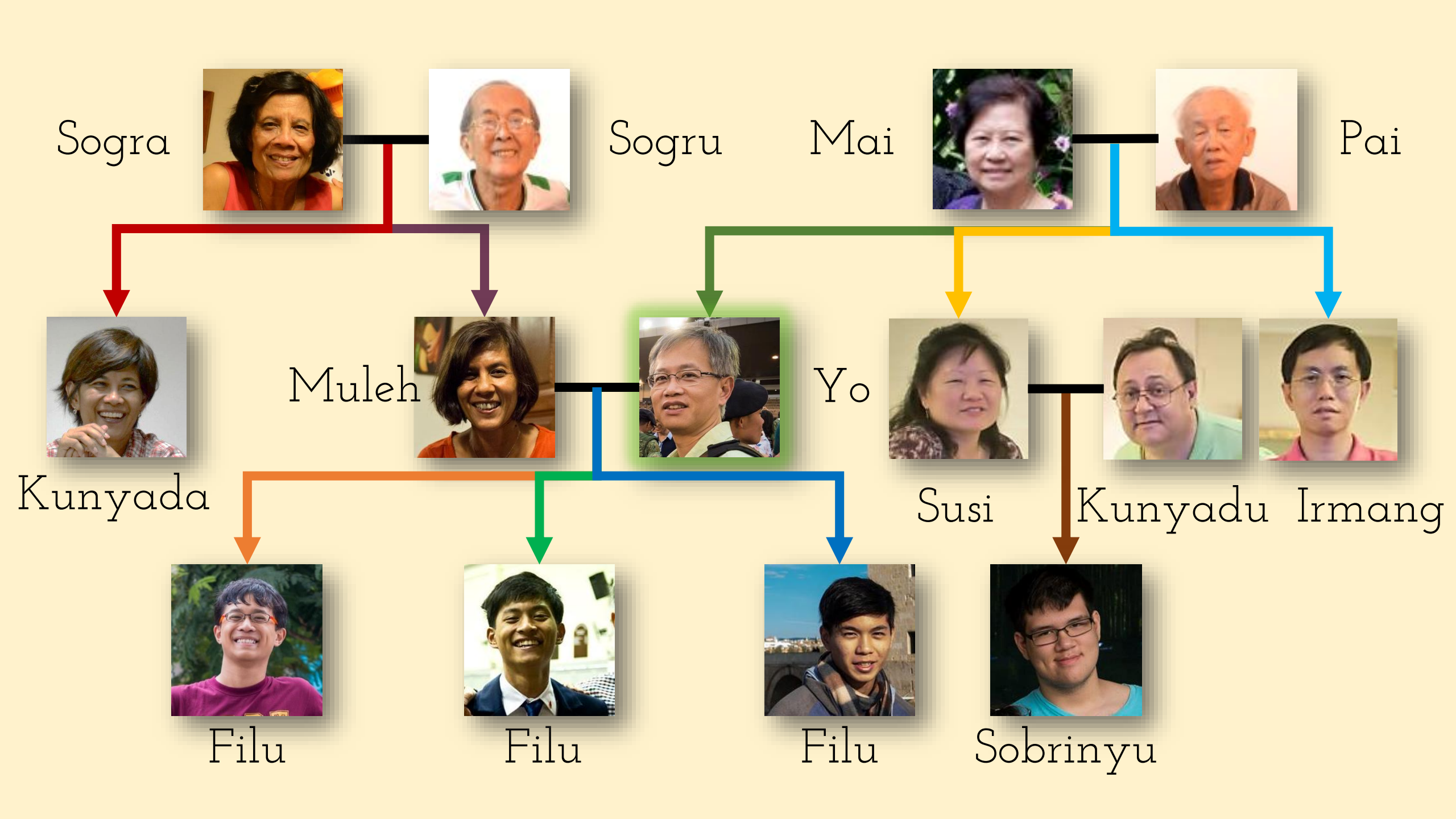
Filu



Filu



Sobrinyu





Femi



Yo



Nora



Filu



Fila



Jeru



Filu



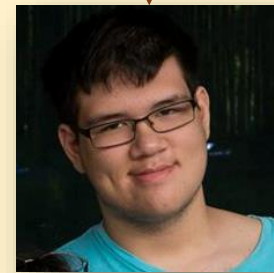
Netu



Netu



Netu



Netu

Kantu

Kantu irmang bos teng?

Yo teng dos irmang.



Eli sa nomi Trevor.

Eli 21. Eli studanti.

Eli papiah inggres.



Eli sa nomi Jared.

Eli 20. Eli studanti.

Eli papiah inggres pun.

Olotu yo sa irmang-irmang.

Yo teng dos irmang
machu.

Yo nteh irmang femi.

Activity time

1. Pick a PARTNER AND DRAW EACH OTHER'S family tree!
2. Of course, this MEANS you NEED to ask them questions in KRISTANG.
3. The MORE questions you ask, the better you will be at the game later!

Bos teng irmang?

Kantu irmang?

Ki olotu sa nomi?

Ki olotu sa sibrisu?

aboh

femi

fila

filu

irmang

jeru

kanyong

krensa

krengkrensa

kunyada

kunyadu

machu

mai-pai

neta

netu

nora

pai

sobrinya

sobrinyu

sogra

sogru

susi

tia

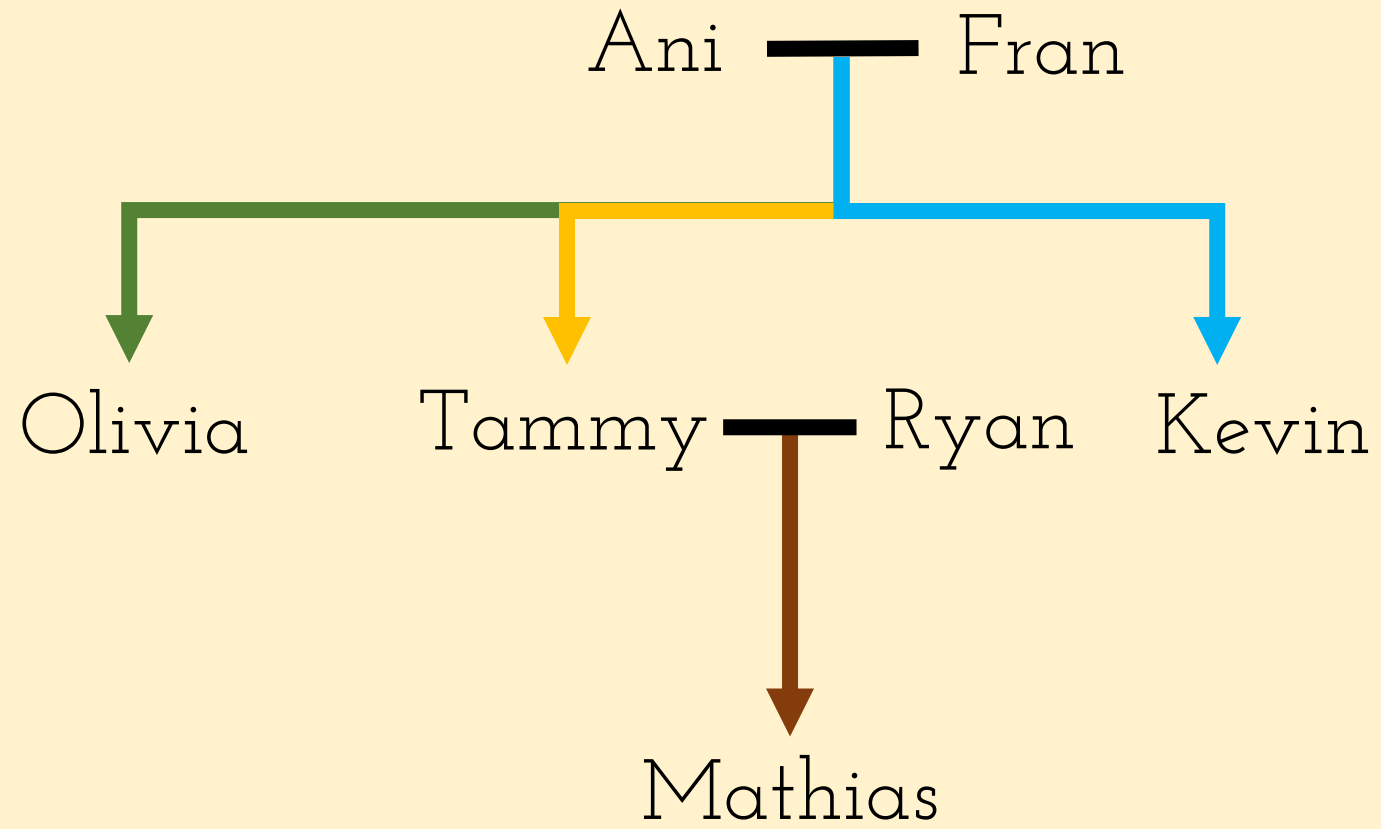
tiu

Nus bringkah!

Nus fazeh ngua familia

Fazeh dos grupu

Kada grupu fazeh ngua albi di familia



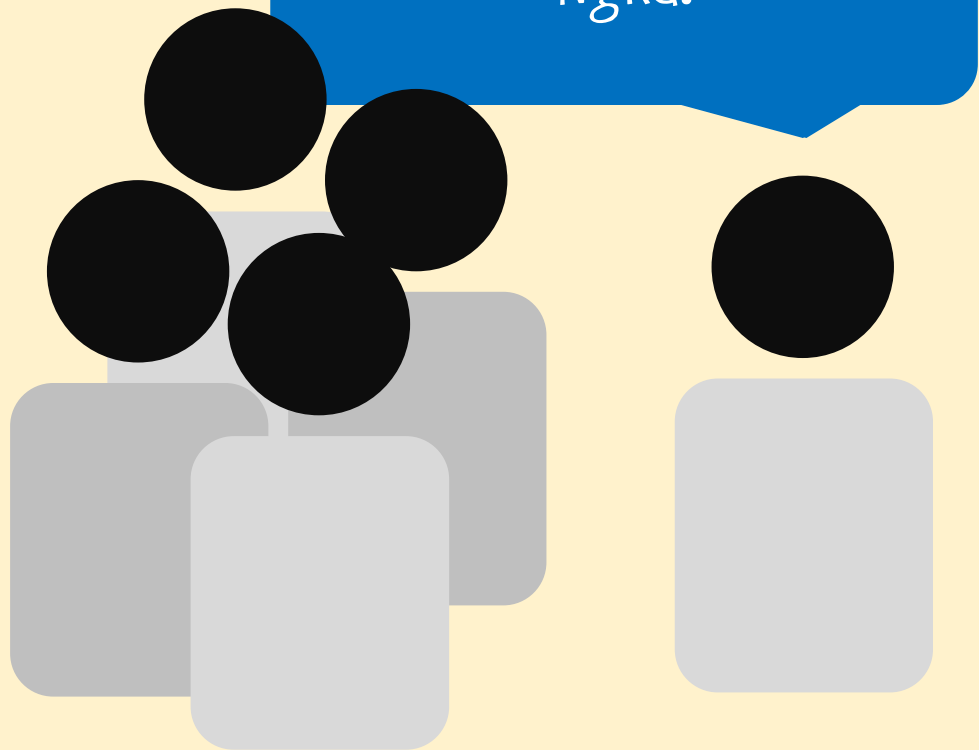
GAME TIME

1. Form two groups.
2. Each group is now a family, and you're going to make your own family tree! Decide who is who e.g. Kevin is Ani's dad, Fuad is Ani's brother, etc. **DON'T TELL THE OTHER TEAM.**
3. The objective of the game is to be the first team to figure out the other team's family tree.

GAME TIME

4. Each round, someone from each team will ask someone else in the other team one yes/no question IN KRISTANG.
5. Begin with this structure:
Yo pruntah ku _____.
6. E.g. Ani wants to ask Kevin, so he says
"Yo pruntah ku Kevin. Kevin, Fuad sa pai Bernard?"

Grup A



Ngka.

Grup B



Bernard, bos teng kuartu primu?

irmang femi	tiu	neta	sogra
irmang machu	tia	netu	sogru
irmang grandi	aboh femi	prima	kunyada
irmang keninu	aboh machu	primu	kunyadu
susi	krensa	sobrinya	madrastu
kanyong	krengkrensa	sobrinyu	padrastu
mai	fila	nora	intrada
pai	filu	jeru	intradu
	dizaboh femi		
	dizaboh machu		

Nus bringkah!

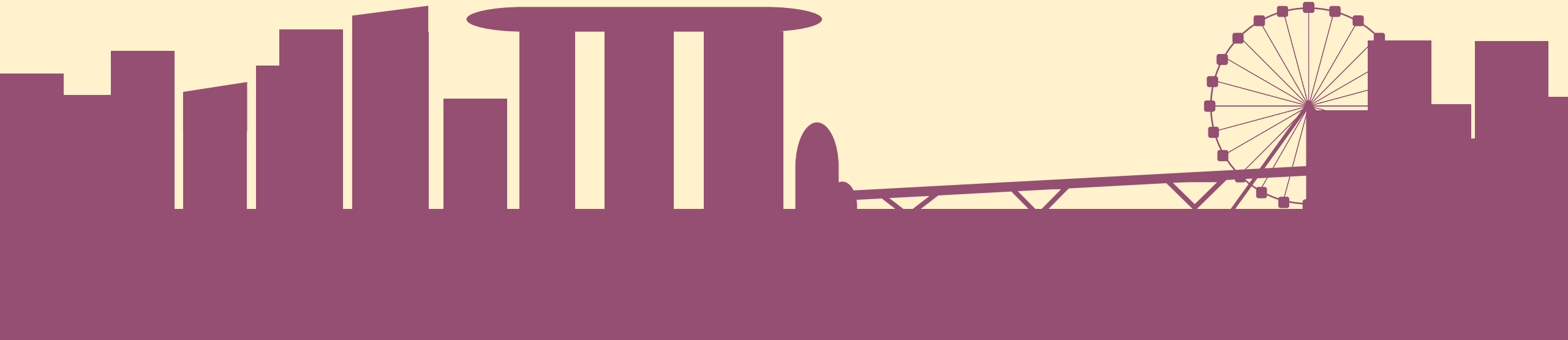
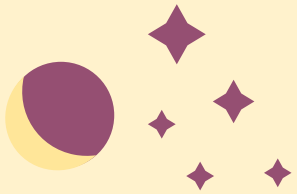
Yo preguntah ku _____.
Bos teng _____?

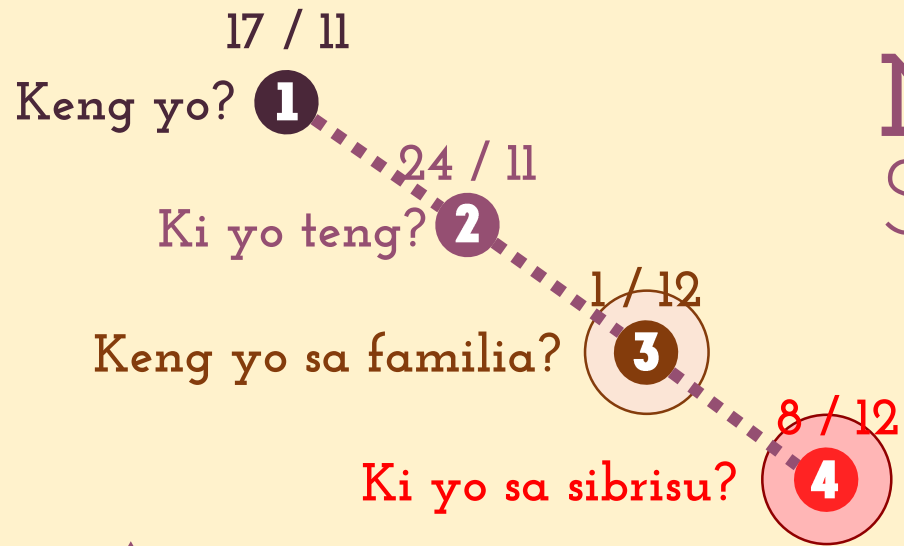
Kabakatra

A) Three sentences in Kristang about your family!

B) All the things that were difficult for you today.

Once you're done, write "1A-0416-03" in the top right hand corner.





Next session
Sesang prosimu | 8 Disembru

Mutu merseh!

Kodrah KRISTANG sigih kung forsa di

