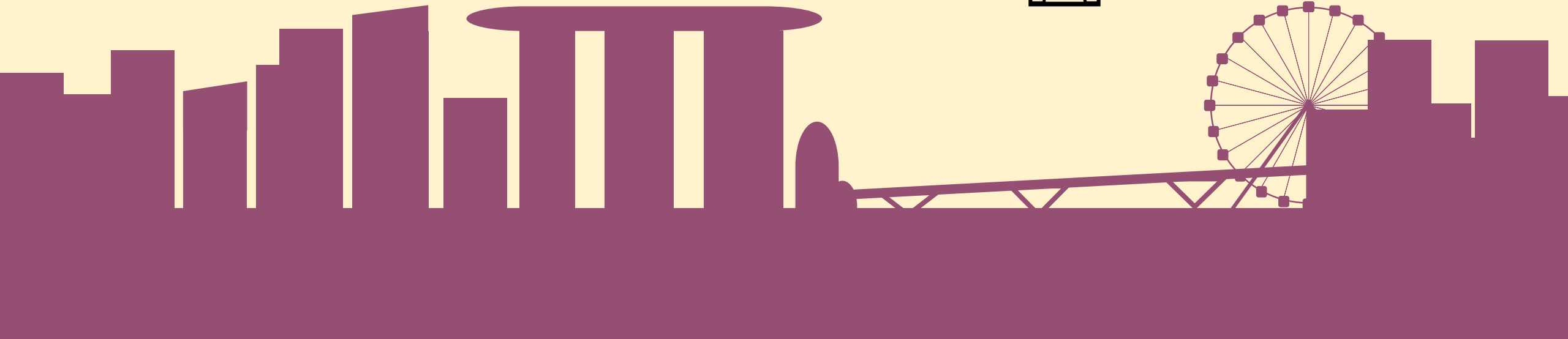


# Teng bong.

Tudu bong?

Kung forsa di:



17 / 11

Keng yo? **1**

24 / 11

Ki yo teng? **2**

1 / 12

Keng yo sa familia? **3**

8 / 12

Ki yo fazeh? **4**

Revision

Verbs!

Game time

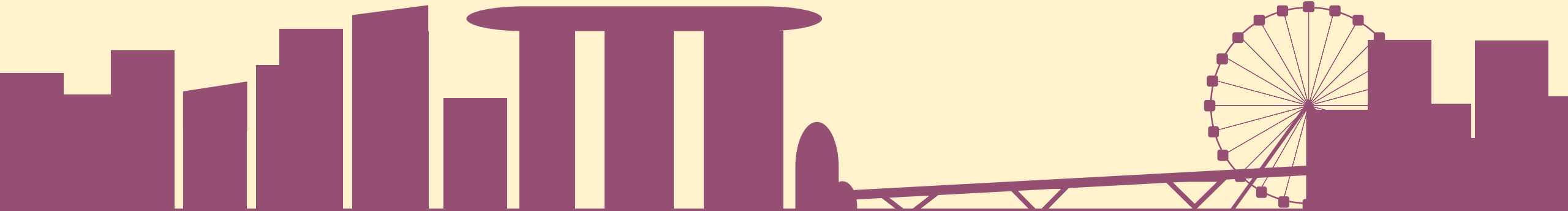
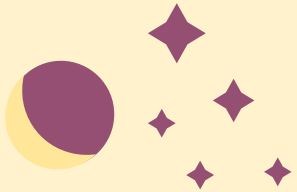
Break

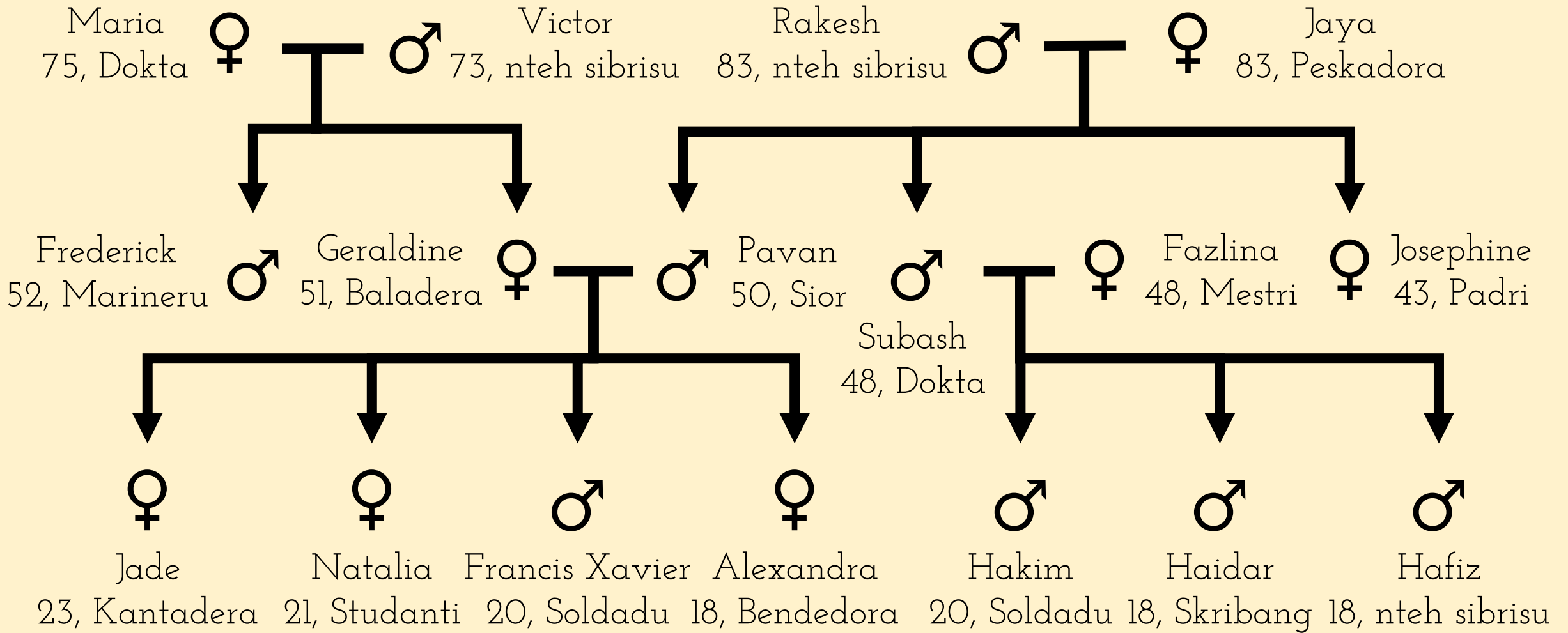
ku/kung

Game time

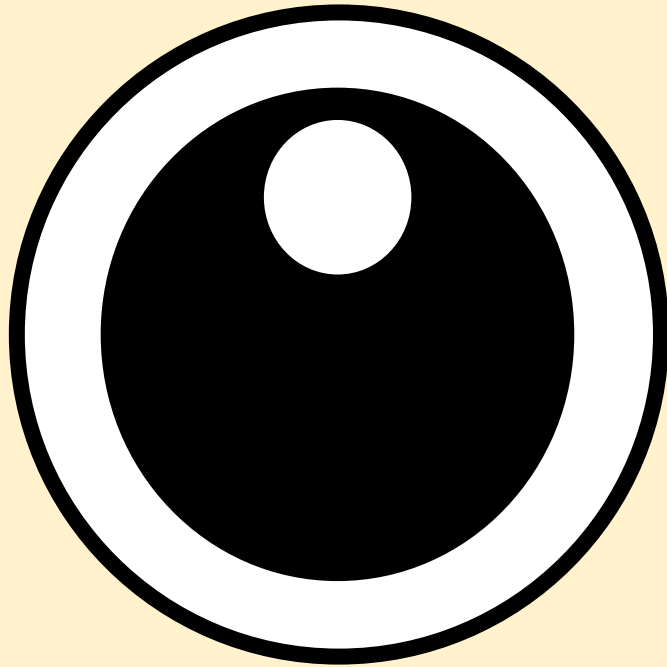
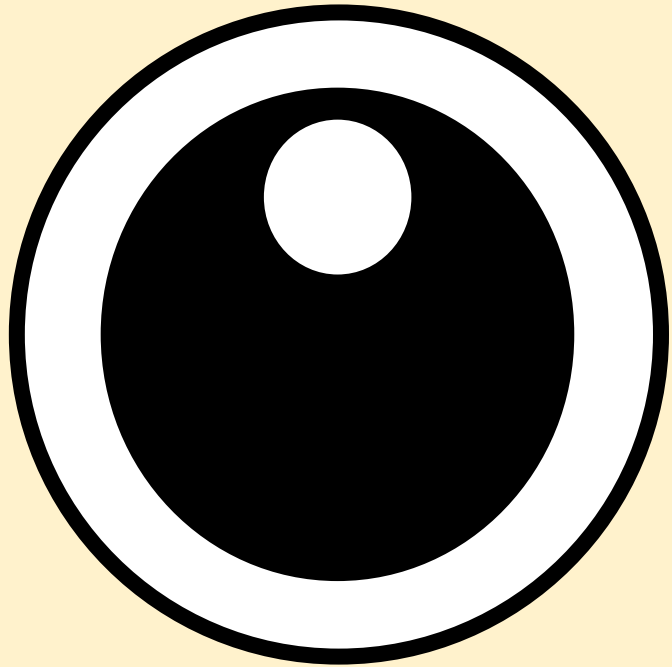
Understanding check

Kabakatra





## Albi di Familia



**olah**

Yo olah kachoru.



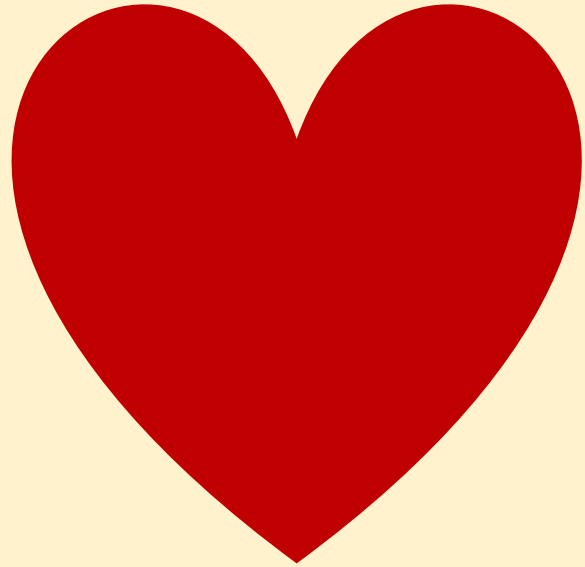
**ubih**

Bos ubih musikku.

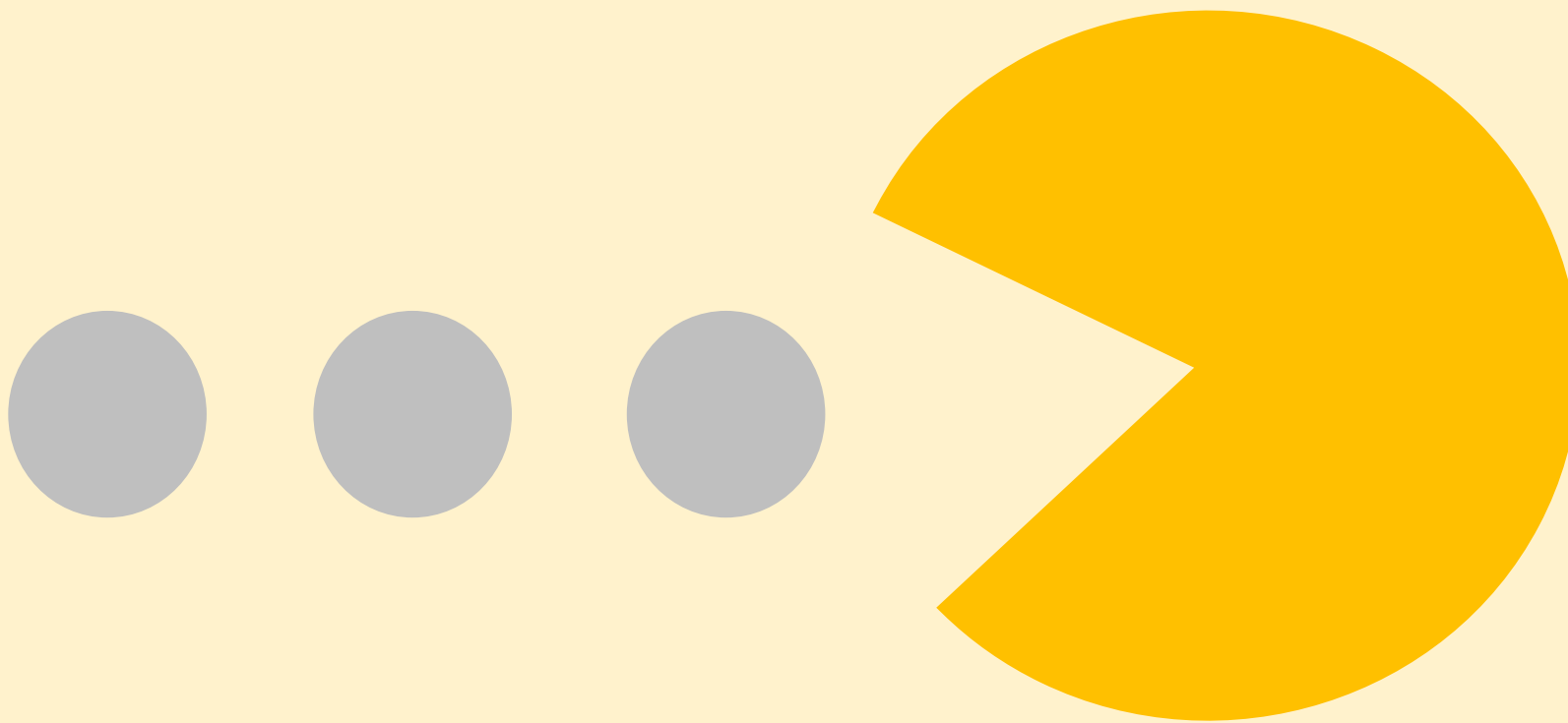
Wah, isti femi chadu  
papiah Kristang ah!

Yo podih!

**papiah**  
Eli papiah Kristang.



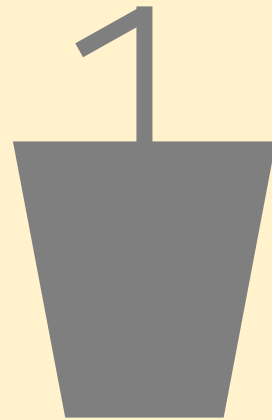
**gostah**  
Nus gostah tudu.



**kumih**

Pacman kumih tantu.



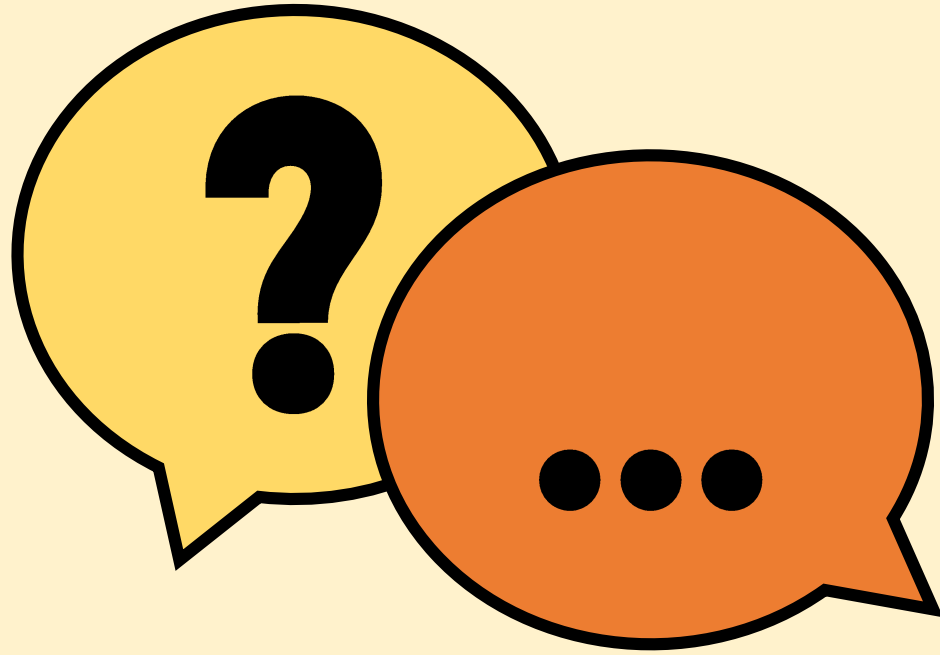


**bebeh**

Pacman bebeh tantu.

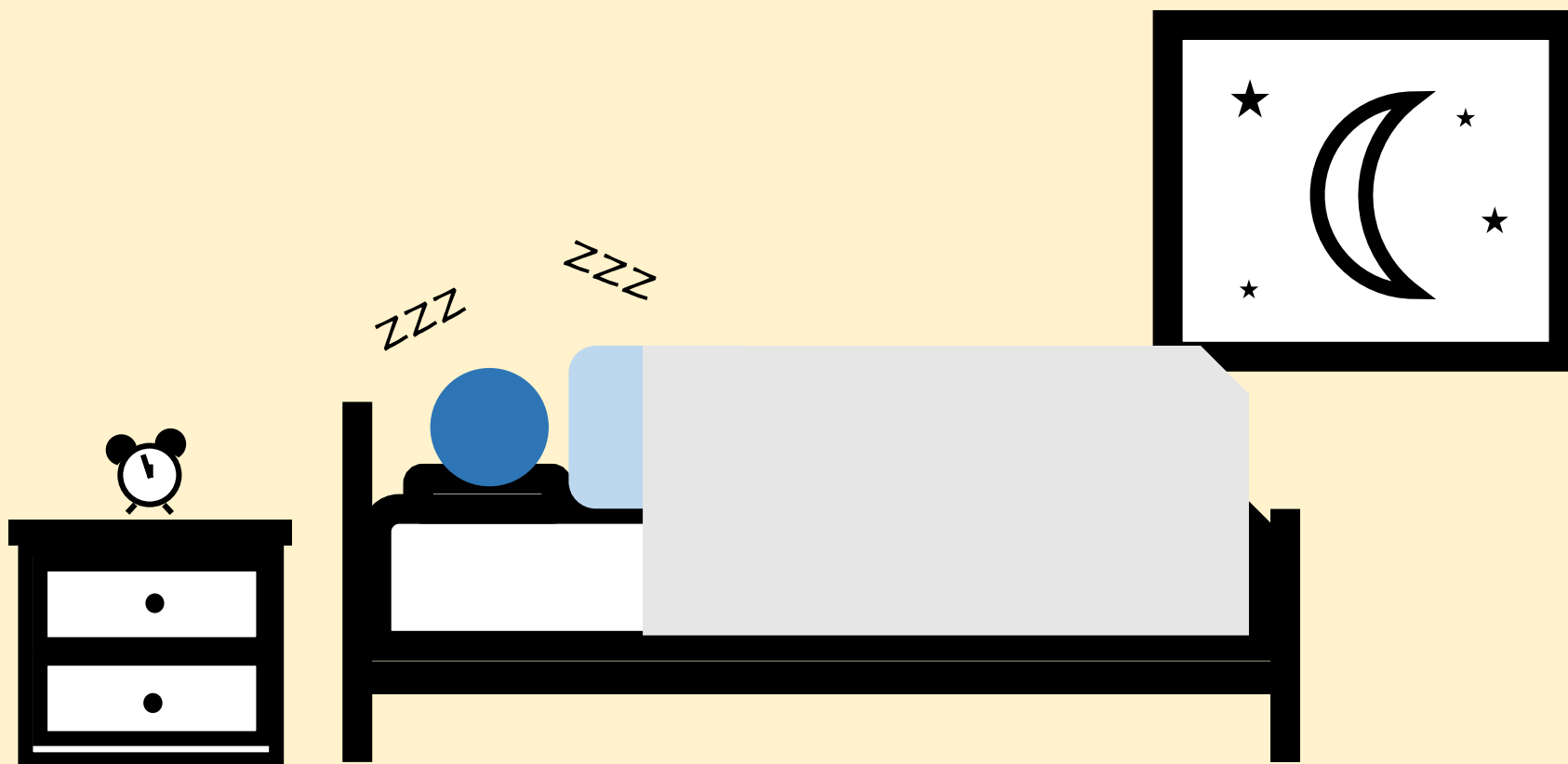


**pruntah**  
Denise pruntah tantu.



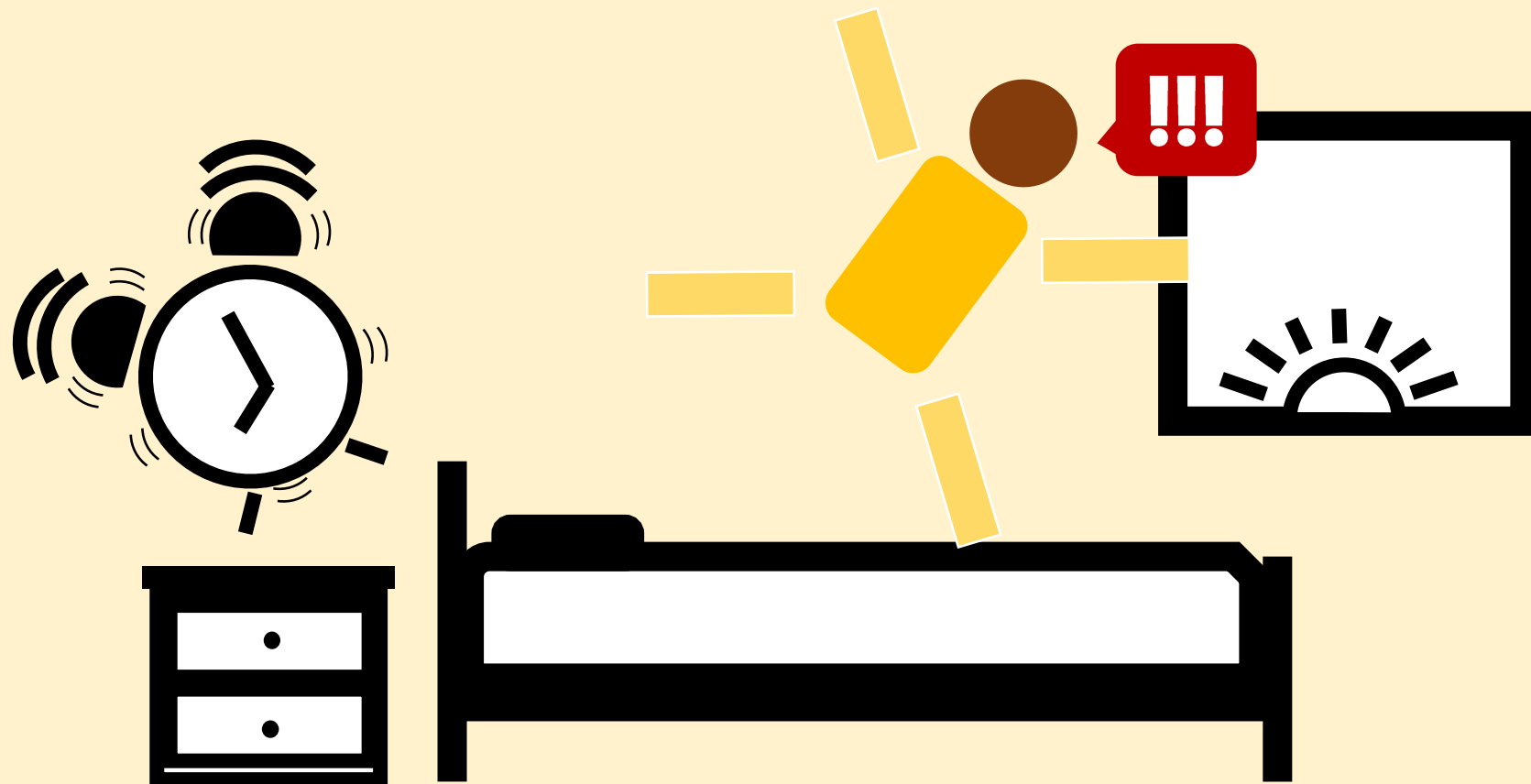
**repostah**

Kevin repostah tantu.



**drumih**

Kristang drumih?



**kodrah**

Ngka, Kristang kodrah!



Ki fazeh  
peskadora?

Peskadora **peskah.**

Ki fazeh  
bendedora?

Bendedora **bendeh.**





Ki fازه  
kantadera?

Kantadera  
**kantah.**





Ki fazeh baladera?

Baladera **balah.**



Ki fazeh kuzinyera?

Kuzinyera **kuze**h.



Ki fazeh  
marineru?

Marineru  
**nabegah.**



Ki fazeh padri?

Padri **rezah**.

Ki fazeh sior?

Sior **lebah.**





Ki fazeh  
skribang?

Skribang  
**skribeh.**

Ki fazeh dokta?

Dokta **judah.**



Ki fazeh soldadu?

Soldadu **brigah.**





Ki fazeh mestri?  
Mestri **insinyah**.

Ki fazeh studanti?  
Studanti **prendeh**.



# Palaksang<sup>^</sup>

brigah  
insinyah  
judah  
kantah  
lebah  
nabegah  
peskah  
pruntah  
rezah

bebeh  
bendeh  
fazeh  
skribeh

kumih  
pidih

teng(ø)

# RESTU

Andah-andah

Bai kakus

Bebeh-bebeh

**nus**

Yo kon Mathias papiah Kristang.

Nus papiah Kristang.

# bolotu

Bos kon Sarah papiah Inggris.

Bolotu papiah Inggris.

**olotu**

Eli kon Mary papiah China.

Olotu papiah China.

jenti x1

yo  
bos  
eli

jenti x2,x3,etc.

nus  
bolotu  
olotu

kon/ku/kung



**olah**

Yo olah kachoru.

Yo olah **kung** Mathias.

**ubih**

Bos ubih gatu.

Bos ubih **kung** Frances.

**papiah**

Eli papiah Kristang.

Eli papiah **kung** Bernard.

**gostah**

Nus gostah libru.

Nus gostah **kung** Tammy.

# kumih

Bolotu kumih kari.

Bolotu kumih kung Ani (!)

# bebeh

Olotu bebeh agu.

Olotu bebeh kung Fuad (!)

Bos falah kung kontu bos sabeh isti jenti.

1 Yo olah gatu. 


2 Yo olah kung gatu. 

Gatu ngka jenti!

1 Yo ubih Chelsea. ❌

2 Yo ubih kung Chelsea. ✅  
Chelsea jenti!



1 Yo papiah Melissa. 

2 Yo papiah kung Melissa. 

Melissa jenti!

1 Yo gostah yo sa dokta. ❌


2 Yo gostah kung yo sa dokta.

Dokta jenti! ✅

1 Yo olah bos sa libru. 

2 Yo olah kung bos sa libru. 

Libru ngka jenti!

1 Yo ubih olotu sa mai. 

2 Yo ubih kung olotu sa mai. 

Mai jenti!

Linggu


1 Yo papiah Kristang. 

2 Yo papiah kung Kristang. 

Jenti

1 Yo gostah eli sa mang. 

2 Yo gostah kung eli sa mang.

Mang parti di jenti, ngka jenti! 

# GAME TIME

1. We're going to play FRASE-FRASE!
2. TAKE A NUMBER.
3. Find all the people with that number. This is your group.  
Keng teng dos/tres/kwartu/etc.?
4. Within your group, find A PARTNER. YOU ARE NOW A PAIR.
5. RETURN ALL NUMBER CARDS TO THE FACILITATORS.

# GAME TIME

6. Each group will get a stack of FRASE-FRASE CARDS.
7. DEAL EVERYONE 15 CARDS.
8. EACH CARD HAS A KRISTANG WORD ON IT.

**teng**

**liang**

**yo**

9. You need to make grammatical sentences with the cards you have.



# GAME TIME

6. Each group will get a stack of FRASE-FRASE CARDS.
7. DEAL EVERYONE 15 CARDS.
8. EACH CARD HAS A KRISTANG WORD ON IT.

**yo**

**teng**

**liang**

9. You need to make grammatical sentences with the cards you have.

# GAME TIME

10. Your sentences form a grid, just like in SCRABBLE. No diagonal sentences. All cards must be connected to the grid.



# GAME TIME

11. ONCE ALL PAIRS HAVE BEEN DEALT 15 CARDS, ALL PAIRS START MAKING THEIR GRIDS SIMULTANEOUSLY. EACH PAIR MAKES THEIR GRID ON THEIR OWN.
12. EVERY TIME ONE PAIR FINISHES THEIR GRID, WITH ALL CARDS CONNECTED, THEY SHOUT, "TOMAH", AND EVERYBODY TAKES TWO NEW CARDS FROM THE DECK TO ADD TO THEIR GRID.
13. YOU CAN REARRANGE YOUR GRID AS OFTEN AS YOU LIKE. THERE ARE NO TURNS.

# GAME TIME

14. If a PARTICULAR CARD DOESN'T WORK FOR YOU, YOU CAN THROW IT BACK INTO THE CENTRE IN EXCHANGE FOR THREE NEW CARDS BY SAYING, "tirah".
15. WHEN THERE ARE LESS CARDS IN THE CENTRE THAN PAIRS, THE FIRST PAIR TO FINISH THEIR GRID WINS! Let ONE OF THE FACILITATORS KNOW AND WE WILL COME AND CHECK THAT ALL YOUR SENTENCES ARE GRAMMATICAL.

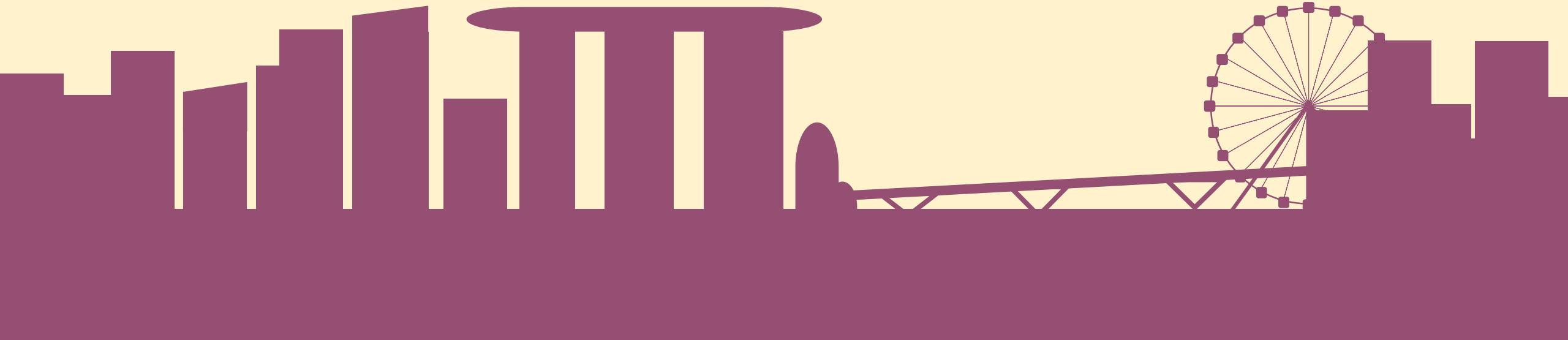
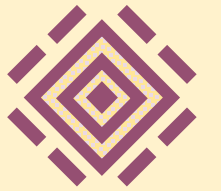
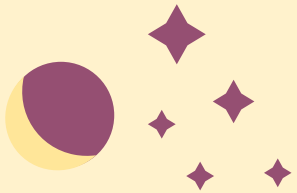
1. Deal 15 cards to each pair.
2. Start making grids of sentences.
3. Each time one pair finishes their grid, they shout "tomah!" and all pairs take two new cards.
4. You can exchange one of your cards for three from the deck by saying "tirah". Place the discarded card at the bottom of the deck.
5. When there are less cards than pairs in the deck, the first pair to finish their grid wins!

# Kabakatra

A) Two sentences using ku/kung!

B) All the things that were difficult for you today.

Once you're done, write "1A-0416-04" in the top right hand corner.



17 / 11  
Keng yo? ①  
24 / 11  
Ki yo teng? ②  
1 / 12  
Keng yo sa familia? ③

8 / 12  
Ki yo fazez? ④  
22 / 12  
Ki yo gostah fazez? ⑤

# Next session

Sesang prosimu | 22 Disembru

# Mutu merseh!

Kodrah KRISTANG sigih kung forsa di

