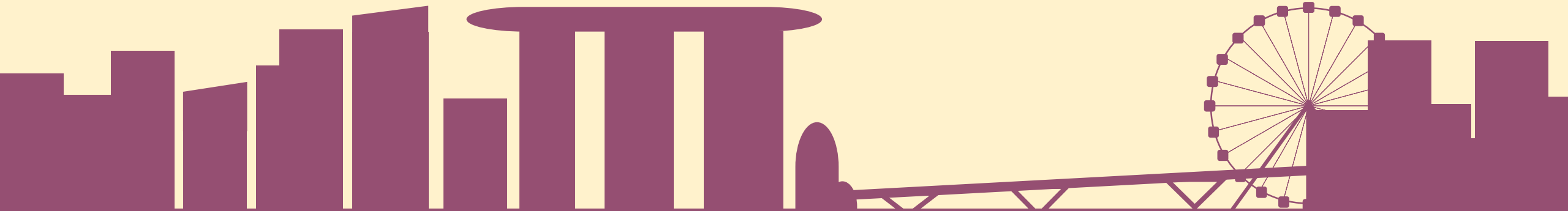




# Klai teng bong.

Tudu bong?

Kung forsa di:



15 / 7  
Keng yo? **1**

29 / 7  
Ki yo teng? **2**

5 / 8  
Keng yo sa familia? **3**

12 / 8  
Ki yo sa sibrisu? **4**

Ki yo gostah fازه? **5**

19 / 8  
**5**

26 / 8  
**6**

Undi yo bibeh? **6**

2 / 9  
**7**

9 / 9  
**8**

Undi yo bai? **8**

16 / 9  
**9**

Kantu anu yo teng? **9**

Kantora yo bai? **9**

Kantora + ora  
Game time

Break  
Tempu di dia  
Game time  
Kabakatra



OZI SA ICON-ICON BENG DI

**FREEPIK**

[WWW.FREEPIK.COM](http://WWW.FREEPIK.COM)



**Kantora agora?**

Ora

Bridu

Bredu

Bridu

**Kantora bos olah...**



**ORA  
-ORA**





# GAME TIME

1. GRAB A meza di dia ('timetable').
2. The timetable tells you where you ARE AT EACH hour.
3. You need to find out who ELSE IN CLASS IS where you ARE AT EACH time! Write their NAME NEXT to the place.
4. You CAN WRITE EACH PERSON'S NAME AT MOST twice.

# RESTU

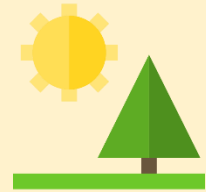
Kumih-kumih

Andah-andah

Bai kakus



Pamiang



Midia



Atadi



Anoti

07:00 setyora pamiang

19:00 setyora atadi

10:00 desora pamiang

22:00 desora anoti

01:00 ungora anoti / pamiang

13:00 ungora midia

08:00 oitora

08:30 oitora **miu**

11:00 onzyora

11:30 onzyora **miu**

# GAME TIME

1. In the same groups, take a world map and a time zone tracker!
2. Your group has exactly one friend in each city labelled on the world map.
3. You've just received a phone call from one of these friends, Alan. However, you don't remember where Alan lives.

# GAME TIME

4. BECAUSE YOU'RE TOO EMBARRASSED TO ADMIT THIS TO ALAN, YOU WHATSAPP EACH OF YOUR OTHER FRIENDS IN TURN AND ASK THEM WHAT TIME IT IS.
5. BECAUSE YOU KNOW WHAT TIME IT IS WHERE YOU ARE (12 NOON IN LISBON), BY PROCESS OF ELIMINATION, YOU WILL BE ABLE TO DETERMINE WHERE ALAN LIVES.
6. MOST OF YOUR FRIENDS' RESPONSES ARE PINNED UP ON THE WALL.



# GAME TIME

1. Four friends' responses are with Andre, Fran, Fuad and Luis; you need to ask them about these four people.
8. The number on the world map next to each place is the time difference between Lisbon and that particular place.  
e.g. Praia has -1, so it is 1 hour behind Lisbon.
9. Be the first group to work out where Alan stays!

# Bolotu teng na Lisbon. Agora doziora midia.

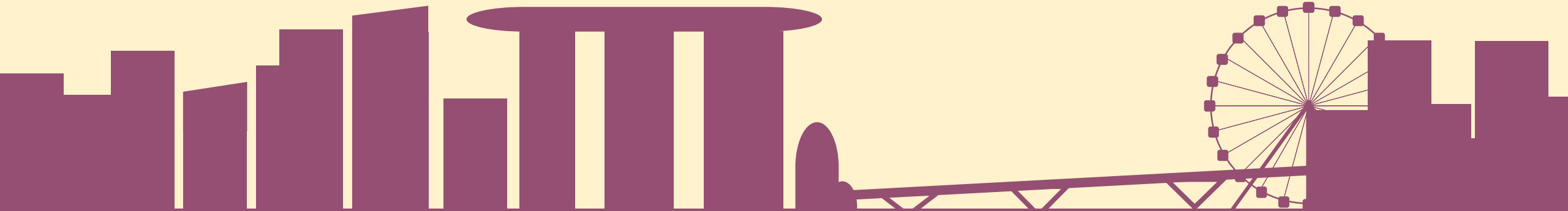
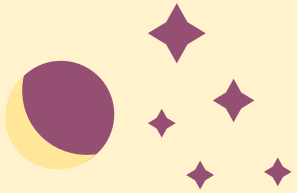


# Kabakatra

A) Two sentences using time words!

B) All the things that were difficult for you today.

Once you're done, write "08-1AL9" in the top right hand corner.



# Next session

Sesang fing | 22 Disembru

## Mutu merseh!

